

US 2 and Colbert Rd.

Community Discussion



Mike Gribner
Regional Administrator

Larry Larson
Assistant Regional Administrator

Community Meeting
Mountainside Middle School

November 1, 2018

Agenda

- Introductions
- Address questions received
- Listen to concerns and answer additional questions
- Next Steps



A few questions and comments so far...

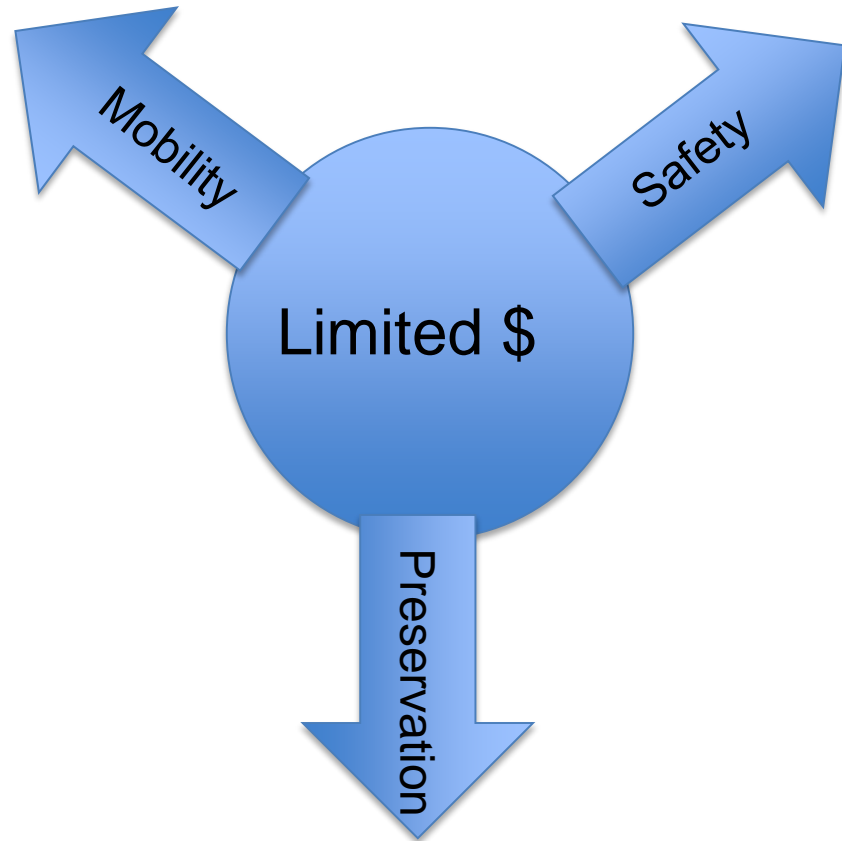
- How does WSDOT prioritize safety projects?
- Can WSDOT build a signal here?
- Can WSDOT build a roundabout here?
- Can't WSDOT at least lower the speed limit?
- Why hasn't WSDOT already done something?
- There are schools in the area and young drivers use this road
- Land use



A few questions and comments so far...

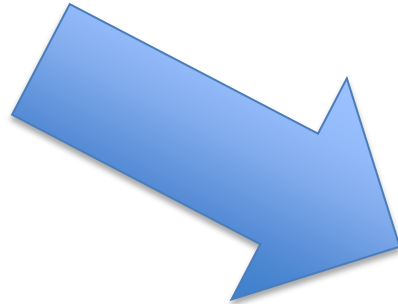
- **How does WSDOT prioritize safety projects?**
- Can WSDOT build a signal here?
- Can WSDOT build a roundabout here?
- Can't WSDOT at least lower the speed limit?
- Why hasn't WSDOT already done something?
- There are schools in the area and young drivers use this road
- Land use





Safety Prioritization

More
Need
than \$



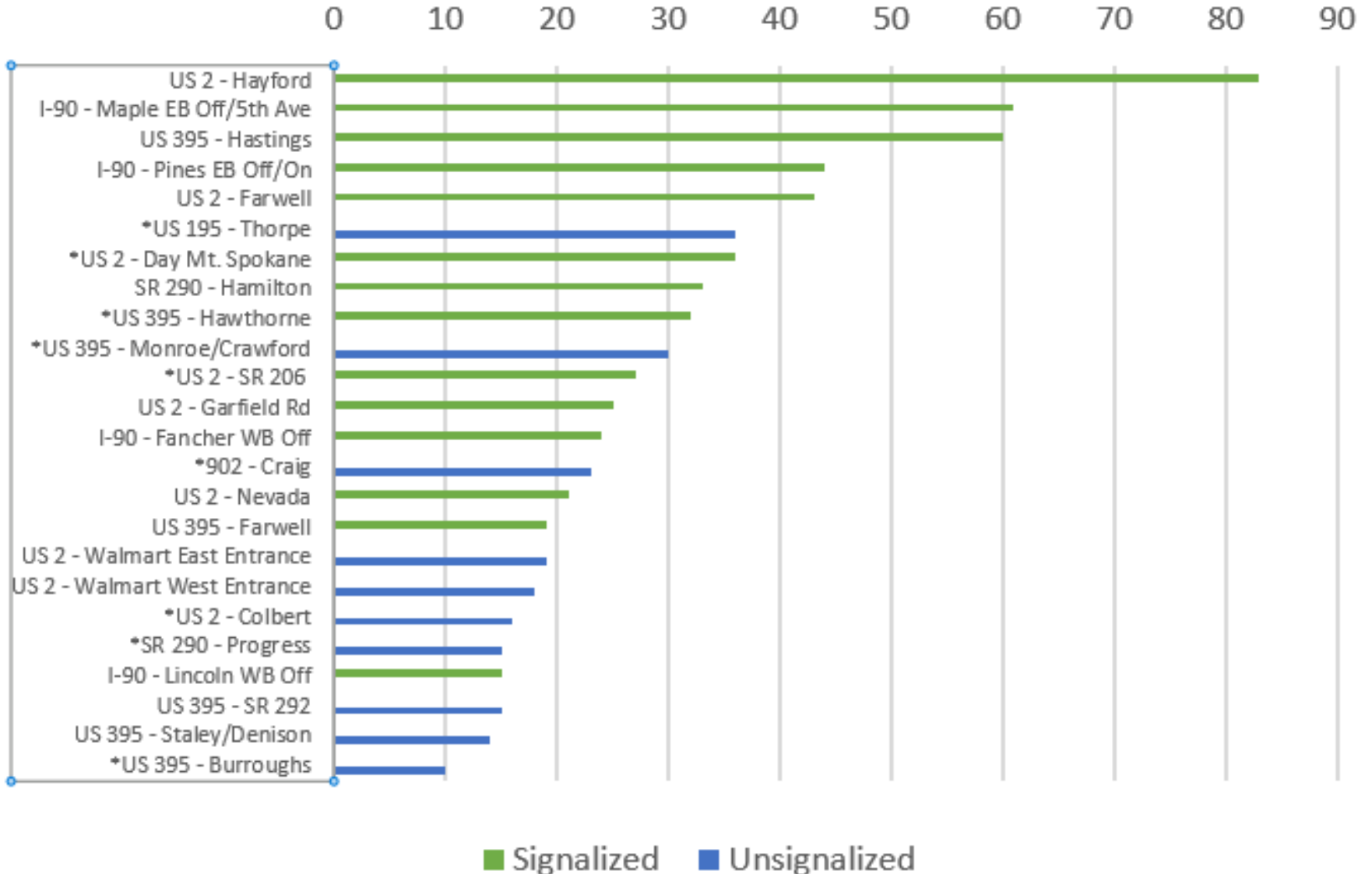
Severity

Frequency

Benefit Cost

What are the trade-offs?

2013 to 2017 Intersection Crash List



US 2 Corridor Study

EASTERN REGION PLANNING

US 2 CORRIDOR STUDY

DEER ROAD TO ELK-CHATTAROY ROAD

Approach

- Least Cost Planning
- Practical Design

Target ZERO

Four "E" Principles

- Education
- Enforcement
- Engineering
- Emergency Medical Service

Washington State Department of Transportation

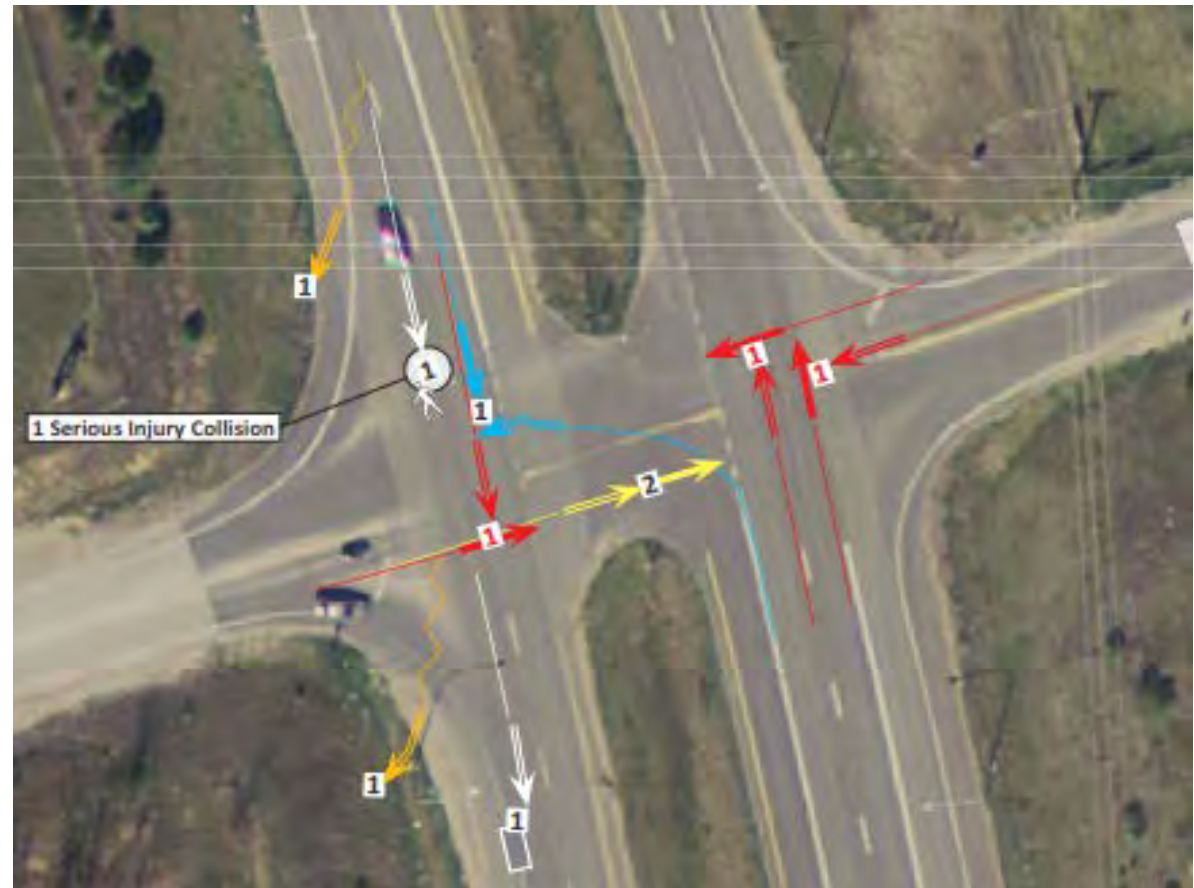
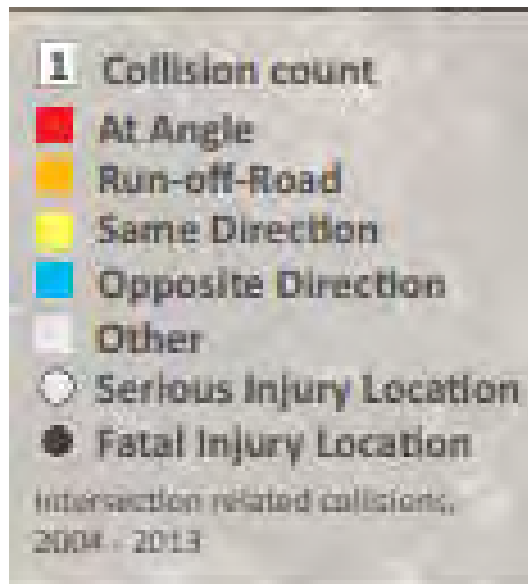
US 2 and SR 206 Vicinity

Public Workshop May 2014

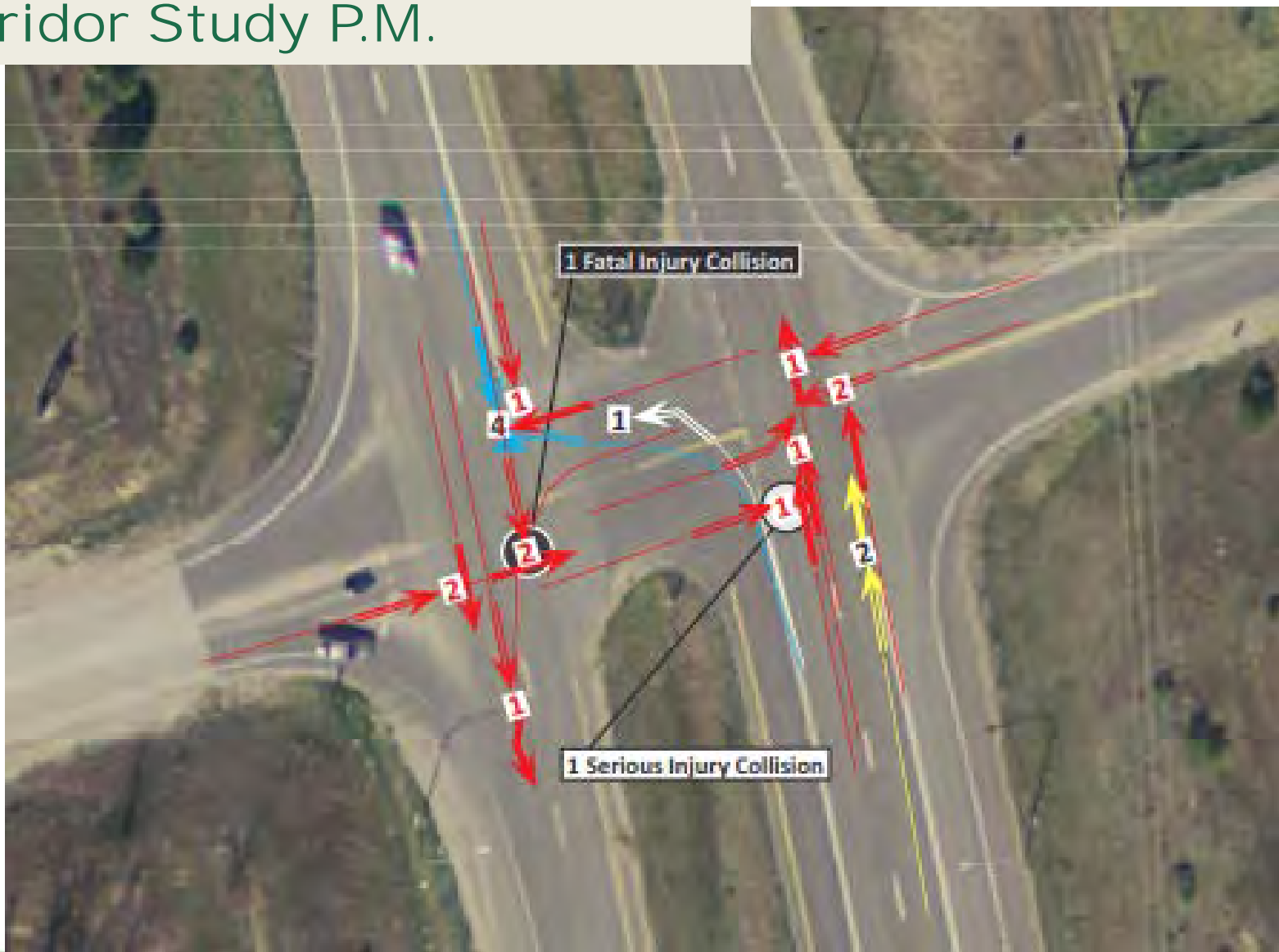
US 2 and Elk-Chattaroy Road Vicinity

US 2 Railroad Bridge near Colbert

Intersection-Related Crashes from US 2 Corridor Study A.M.



Intersection-Related Crashes from US 2 Corridor Study P.M.

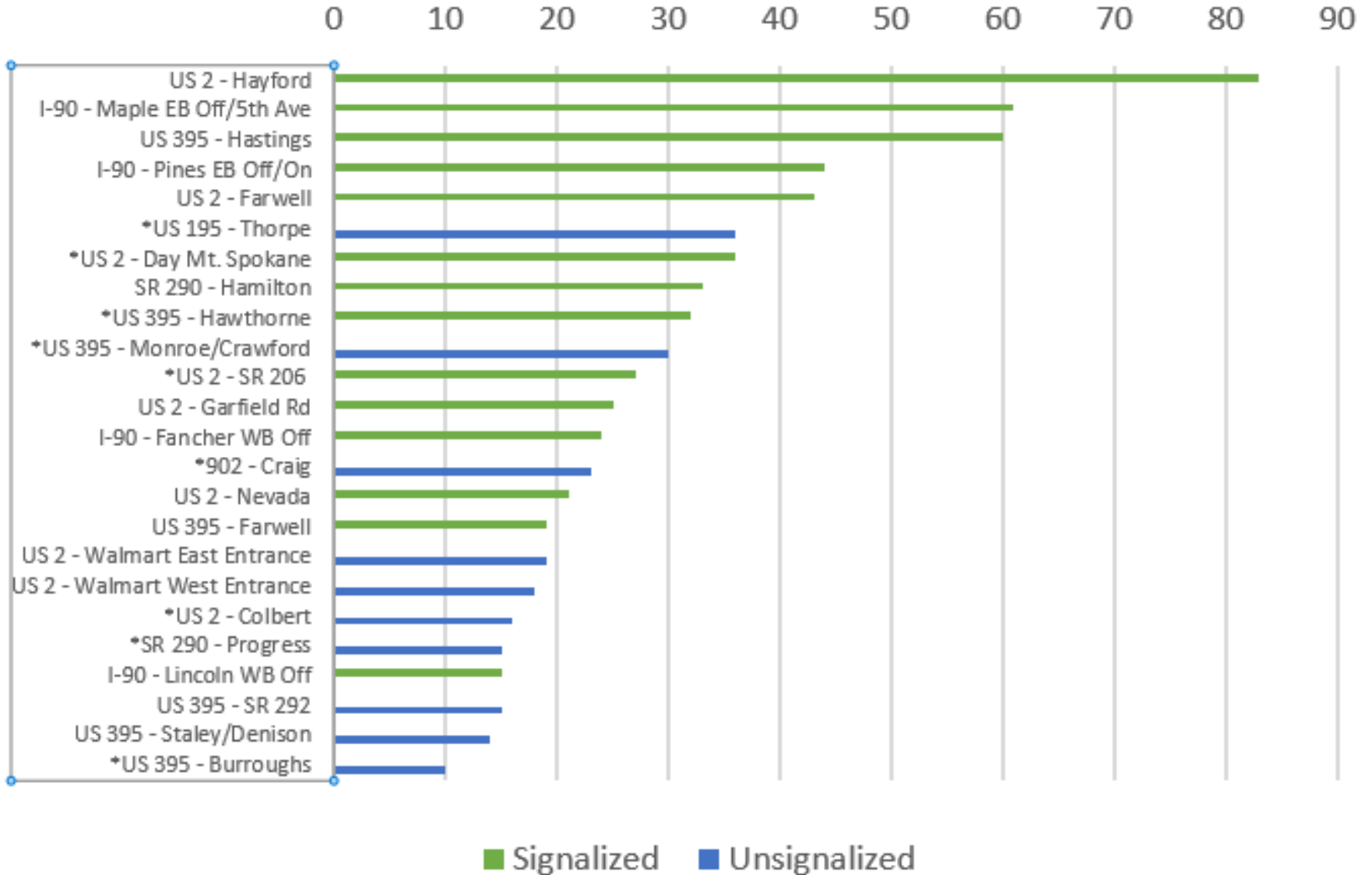


Intersection-Related Crashes

US 2 – Colbert Road 2013-2017

Year	Fatal	Suspected Serious Injury	Suspected Minor Injury	Possible Injury	No Apparent Injury	Total
2013						0
2014				2	4	6
2015			1	1		2
2016		1		1	1	3
2017		1	2	1	1	5
Total	0	2	3	5	6	16

2013 to 2017 Intersection Crash List



A few questions and comments so far...

- How does WSDOT prioritize safety projects?
- **Can WSDOT build a signal here?**
- Can WSDOT build a roundabout here?
- Can't WSDOT at least lower the speed limit?
- Why hasn't WSDOT already done something?
- There are schools in the area and young drivers use this road
- Land use



Flint Road Example





Signal Installed Sept of 2014



Accidents Before:

17

Accidents After:

35

A few questions and comments so far...

- How does WSDOT prioritize safety projects?
- Can WSDOT build a signal here?
- **Can WSDOT build a roundabout here?**
- Can't WSDOT at least lower the speed limit?
- Why hasn't WSDOT already done something?
- There are schools in the area and young drivers use this road
- Land use



A few questions and comments so far...

- How does WSDOT prioritize safety projects?
- Can WSDOT build a signal here?
- Can WSDOT build a roundabout here?
- **Can't WSDOT at least lower the speed limit?**
- Why hasn't WSDOT already done something?
- There are schools in the area and young drivers use this road
- Land use



A few questions and comments so far...

- How does WSDOT prioritize safety projects?
- Can WSDOT build a signal here?
- Can WSDOT build a roundabout here?
- Can't WSDOT at least lower the speed limit?
- **Why hasn't WSDOT already done something?**
- There are schools in the area and young drivers use this road
- Land use



What's been done

Recent low cost enhancements in last five years to improve safety performance:

- Striping
- Signing improvements
- Flashing signs to indicate entering traffic from Colbert Road.



What types of things
can be done?
What are the trade-
offs?



A few questions and comments so far...

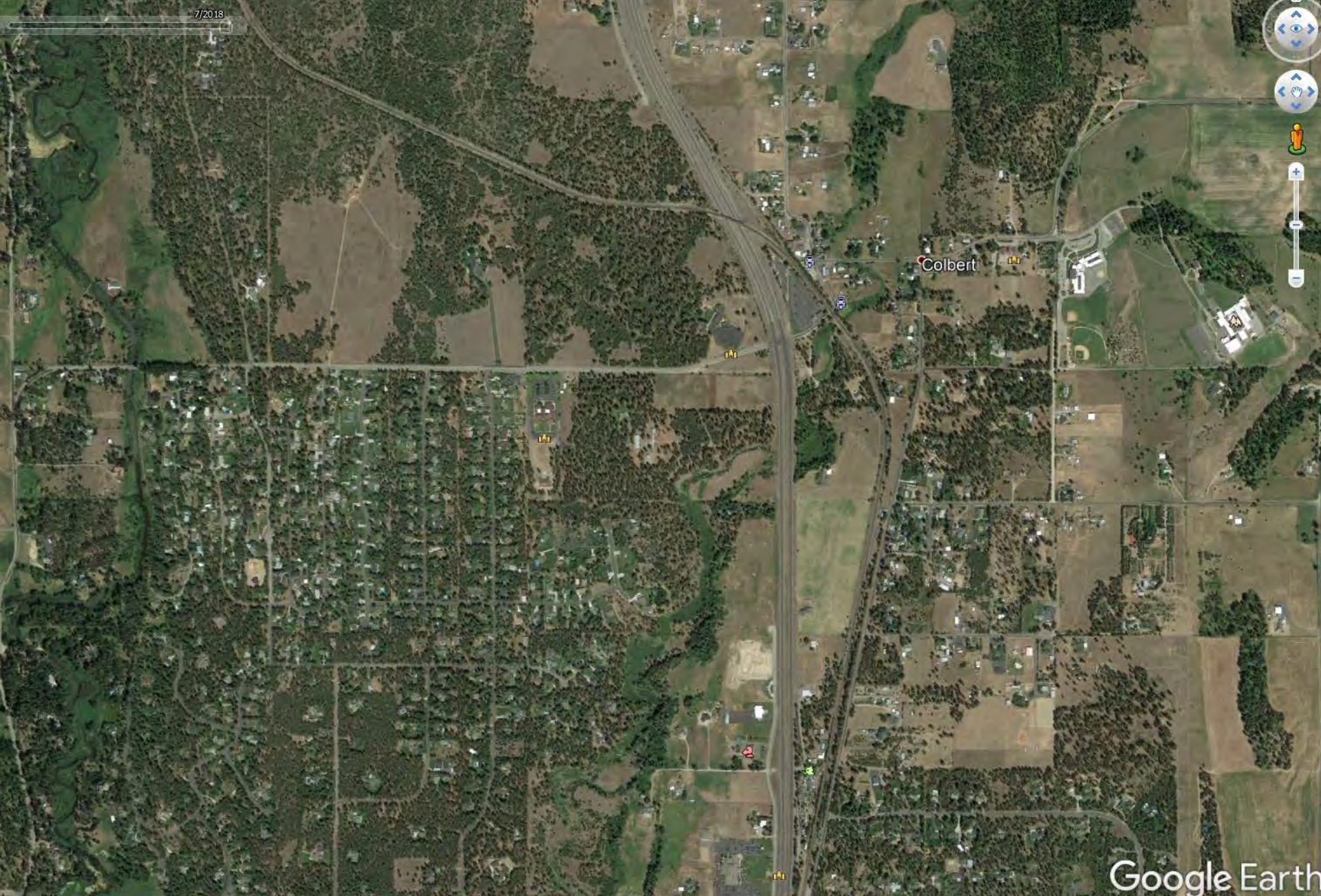
- How does WSDOT prioritize safety projects?
- Can WSDOT build a signal here?
- Can WSDOT build a roundabout here?
- Can't WSDOT at least lower the speed limit?
- Why hasn't WSDOT already done something?
- There are schools in the area and young drivers use this road
- Land use





Image U.S. Geological Survey

Google Earth



Google Earth

Comments and Questions

Next steps

Thank you!

